

SYMBOL	DESCRIPTION
	COMBINATION MAGNETIC STARTER
	MAGNETIC STARTER
	DIRECT CONNECTION TO EQUIPMENT
	NON-FUSED DISCONNECT SWITCH
	FUSED DISCONNECT SWITCH
	MANUAL STARTER
	JUNCTION BOX
	RELAY
	MOTOR - SINGLE PHASE
	MOTOR - 3 PHASE
	MOTOR - 3 PHASE WITH NON-FUSIBLE DISCONNECT
	START/STOP PUSHBUTTON FOR POWER
	CONTROL PANEL
	MAN HOLE
	HEAT TRACING
	HORSEPOWER RATED MOTOR TOGGLE SWITCH
	PUSHBUTTON FOR POWER
	SINGLE RECEPTACLE
	DUPLEX RECEPTACLE
	SPECIAL RECEPTACLE
	SPLIT CIRCUIT DUPLEX RECEPTACLE
	QUADRUPLEX RECEPTACLE
	FURNITURE FEED
<b>DESIGNATIONS FOR RECEPTACLES</b>	
C	CEILING
D	DEPRESSED WITH FLOOR SLAB/ACCESS FLOOR
F	FURNITURE MTD
GFCI	GROUND FAULT CIRCUIT INTERRUPTER
S	MOUNTED ON SURFACE OF FLOOR
U	UNDERFLOOR
WP	WEATHER PROTECTED
	FEEDER BUSWAY
	PLUG-IN BUSWAY WITH BUS PLUG
30 15A	30 DENOTES SWITCH RATING, 15A DENOTES FUSE RATING
	PLUG-IN BUSWAY WITH TAP BOX
	PLUG-IN BUSWAY WITH EXPANSION BOX
	PAD MOUNT TRANSFORMER
	SUSPENDED TRANSFORMER
	RECEPTACLE AND/OR LIGHTING PANELBOARD - SURFACE MOUNTED
	RECEPTACLE AND/OR LIGHTING PANELBOARD - RECESSED
	POWER AND/OR DISTRIBUTION PANELBOARD - SURFACE MOUNTED
	POWER AND/OR DISTRIBUTION PANELBOARD - RECESSED
<b>TRANSFORMER &amp; PANELBOARD IDENTIFICATION</b>	
<b>1. EQUIPMENT DESIGNATION:</b>	
LP = LIGHTING	
PP = POWER	
DP = DISTRIBUTION	
SP = SWITCHBOARD	
SG = SWITCHGEAR	
PDC = POWER DISTRIBUTION CENTER	
MCC = MOTOR CONTROL CENTER	
RP = RELAY PANEL	
MP = MECHANICAL	
TX = TRANSFORMER	
UP = UPS	
MTS = MANUAL TRANSFER SWITCH	
<b>2. VOLTAGE DESIGNATION:</b>	
2 = 120/208V - 3PH	
6 = 347/600V - 3PH	
<b>3. SYSTEM DESIGNATION:</b>	
N = NORMAL	
E = EMERGENCY	
UA = UPS #1	
UB = UPS #2	
<b>4. FLOOR DESIGNATION:</b>	
1 = FIRST FLOOR	
2 = SECOND FLOOR	
3 = ROOF	
<b>5. PANEL NO. DESIGNATION:</b>	
01 = PANELBOARD #1	
02 = PANELBOARD #2	
03 = PANELBOARD #3	
ETC.	

SYMBOL	DESCRIPTION
NORMAL	LIFE SAFETY
	CEILING, OR PENDANT MOUNTED LUMINAIRE
	LINEAR CEILING, PENDANT OR WALL MOUNTED LUMINAIRE
	WALL MOUNTED LUMINAIRE
	POLE MOUNTED LUMINAIRE
\$	LIGHT SWITCH
<b>DESIGNATIONS FOR LIGHT SWITCHES</b>	
3 - 3-WAY	
4 - 4-WAY	
D - DIMMER	
K - KEY OPERATED	
MC - MOMENTARY CONTACT	
P - PILOT LIGHT	
OC - OCCUPANCY SENSOR SWITCH	
	CEILING MOUNTED OCCUPANCY SENSOR
	WALL MOUNTED OCCUPANCY SENSOR
	CEILING MOUNTED PHOTO-ELECTRIC CONTROL
	WALL MOUNTED PHOTO-ELECTRIC CONTROL
	EXIT SIGN - CEILING MOUNTED
	ARROW(S) DENOTES DIRECTION
	SHADED AREA(S) DENOTES FACE
	EXIT SIGN - WALL MOUNTED
	EMERGENCY LIGHTING BATTERY WITH 2 HEADS
	DOUBLE REMOTE EMERGENCY LIGHTING HEADS
	SINGLE REMOTE EMERGENCY LIGHTING HEADS
	SPACE TYPE FOR LIGHTING CONTROL
	REFER TO SEQUENCE OF OPERATION

SYMBOL	DESCRIPTION
	LIGHTNING AIR TERMINAL
	PIG TAIL CONNECTION
	CONDUCTOR DOWN TO BUILDING GROUND LOOP
	GROUND ROD
	L DENOTES LIGHTNING PROTECTION
	GROUND ROD INSPECTION WELL
	INSPECTION WELL
	GROUND CONNECTION
<b>OTHER CONNECTION TYPES AS NOTED</b>	
GP = GROUND PLATE	
GSU = GROUND STIRRUP	
REB = REBAR	
TH = THERMITWELD	
CW = COMPRESSION WELD	
<b>GROUND BUS</b>	
	GROUND BUS
	#4/0 BARE COPPER GROUND GRID CONDUCTOR (UNDER SLAB)
	#4/0 BARE COPPER GROUND GRID CONDUCTOR (EMBEDDED IN SLAB)
	#4/0 BARE COPPER GROUND LOOP, RISER & JUMPER
	GROUND LOOP SERVICE ROOM
	LIGHTNING GROUND CONDUCTOR

SYMBOL	DESCRIPTION
	REMOTE ANNUNCIATOR
	FIRE ALARM CONTROL PANEL
	FIRE ALARM MANUAL PULL STATION
	PREACTION ABORT
	PREACTION PULL
	CARBON DIOXIDE ABORT
	CARBON DIOXIDE PULL
	FIRE ALARM BELL
	FIRE ALARM BELL w STROBE
	CEILING MOUNTED FIRE ALARM SPEAKER
	WALL MOUNTED FIRE ALARM SPEAKER
	FIRE ALARM HORN
	FIRE ALARM HORN w STROBE
	WALL MOUNTED STROBE LIGHT
	CEILING MOUNTED STROBE LIGHT
	WARNING LIGHT
	ACTIVE FIELD DEVICE CONTROL MODULE
	ACTIVE FIELD DEVICE MONITOR MODULE
	END OF LINE DEVICE
	FIRE ALARM RELAY
	FIRE DO NOT ENTER SIGN
	INDIVIDUAL ADDRESSABLE MODULE
	ISOLATOR MODULE
	MAGNETIC DOOR HOLDER
	POST INDICATOR VALVE
	SPRINKLER FLOW SWITCH
	SPRINKLER PRESSURE SWITCH
	SPRINKLER SUPERVISED VALVE
	ZONE ADAPTOR MODULE
	FLAME DETECTOR
	GAS DETECTOR
	HEAT DETECTOR
	SMOKE DETECTOR
	COMBINATION HEAT & SMOKE DETECTOR
<b>SMOKE DETECTORS</b>	
AS = AIR SAMPLING	
P = PHOTOELECTRIC	
I = IONIZATION	
BR = BEAM RECIEVER	
BT = BEAM TRANSMITER	
ID = IN DUCT	
R = RELAY BASE	
SS = SINGLE STATION	
SB = SOUNDER BASE	
U = UNDER RAISED FLOOR	
<b>HEAT DETECTORS</b>	
R = RATE OF RISE	
F = FIXED	
RF = RATE OF RISE/FIXED COMBO	
RC = RATE COMPENSATION	
LHD = LINEAR HEAT DETECTOR	
<b>FLAME DETECTORS</b>	
IR = INFRA RED	
<b>GAS DETECTORS</b>	
CO = CARBON MONOXIDE	

SYMBOL	DESCRIPTION
	FIBRE OPTIC DATA OUTLET
	COPPER DATA OUTLET
	FIBRE TELEPHONE OUTLET
	COPPER TELEPHONE OUTLET
<b>DESIGNATIONS FOR DATA/TELEPHONE OUTLETS</b>	
ATEL ADMINISTRATIVE TELEPHONE	
C CEILING	
CAP CUSTOMER ASSISTANCE PHONE	
D DEPRESSED WITH FLOOR SLAB/ACCESS FLOOR	
DAS DISTRIBUTED ANTENNA SYSTEM	
DDC DIRECT DIGITAL CONTROL	
EEP EMERGENCY ELECTRICAL CONTROL PANEL	
ETEL EMERGENCY TELEPHONE	
F FURNITURE MOUNTED	
ITEL INFORMATION TELEPHONE	
O OVERHEAD	
P PENDANT	
PATEL PUBLIC ASSISTANCE TELEPHONE	
R RACK MOUNTED PATCH PANEL	
S MOUNTED ON SURFACE OF FLOOR	
U UNDERFLOOR	
W FLUSH WITH SURFACE WALL MOUNTED	
WAP WIRELESS ACCESS POINT	

CCTV	
SYMBOL	DESCRIPTION
	CAMERA

ACCESS CONTROL	
SYMBOL	DESCRIPTION
	DOOR CONTROLLER
	DOOR MONITOR CONTACT
	DOOR BY-PASS KEYED SWITCH
	ELECTRIC DOOR STRIKE
	GLASS BREAK DETECTOR
	INTRUSION ACCESS CONTROL
	KEY PAD
	MOTION DETECTOR
	MAGNETIC LOCK
	DRIVER COUPLER VIEW MONITOR
	PUSH TO EXIT
	REQUEST TO EXIT
	PUSH BUTTON
	SIREN
	ELECTRONIC LOCKSET
	FLOOR LIMIT SWITCH
	ELECTRONIC HINGE

INTERCOMS	
	INTERCOM HANDSET
	INTERCOM WALL TERMINAL

CLIENT

CITY OF TORONTO  
Corporate Real Estate Management  
Project Management Office  
Metro Hall Toronto, ON  
M5V 3C6

COPYRIGHT This drawing has been prepared solely for the intended use. Thus any reproduction or distribution for any purpose other than authorized by Arcadis is prohibited. Written dimensions shall have precedence over scaled dimensions. Contractors shall verify and be responsible for all dimensions and conditions on the job, and Arcadis shall be informed of any variations from the dimensions and conditions shown on the drawing. Shop drawings shall be submitted by Arcadis for general conformance before proceeding with fabrication.		
Arcadis Professional Services (Canada) Inc.		
ISSUES		
No.	DESCRIPTION	DATE
B	90% SUBMISSION	2020-07-16
A	50% SUBMISSION	2024-10-31
C	PERMIT	2025-08-11
D	TENDER	2025-09-02
E	ADDENDUM 11	2025-10-03

CONSULTANTS	
SEAL	

PRIME CONSULTANT

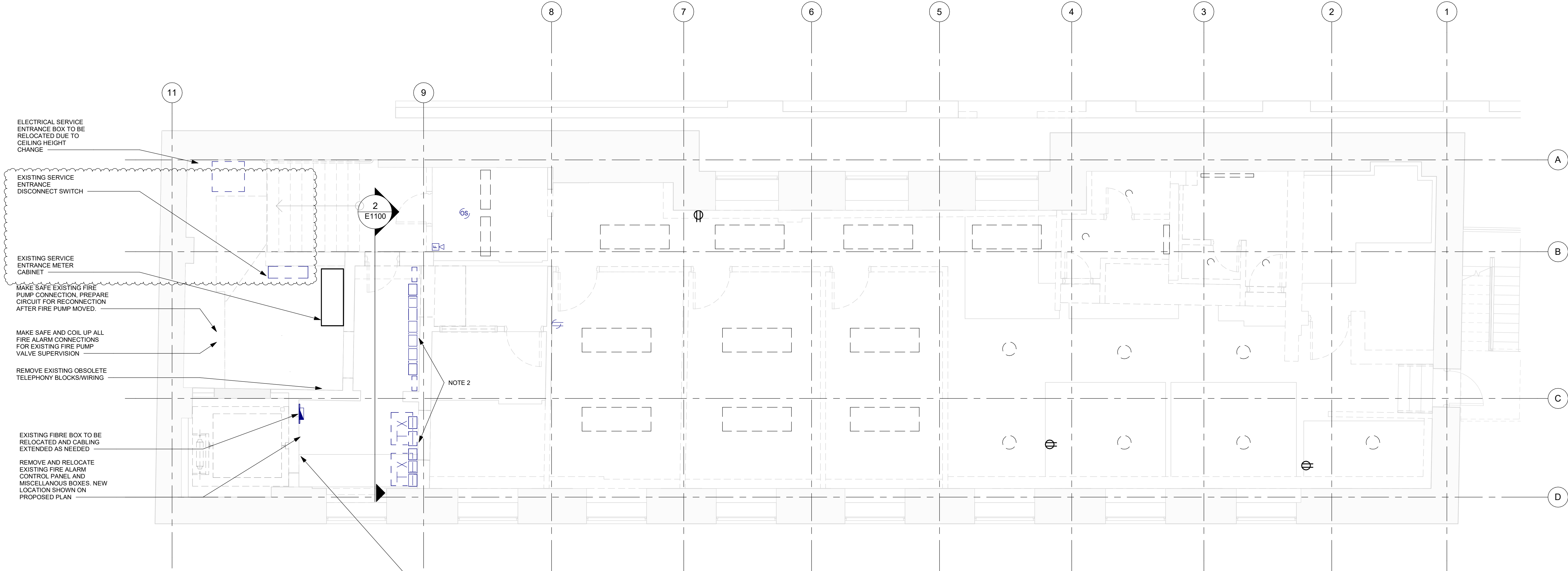
175 Galaxy Blvd,  
Toronto, ON M9W 0C9, Canada  
tel 416 679 1930  
www.arcadis.com

PROJECT TITLE  
CITY OF TORONTO  
ACCESSIBILITY UPGRADES

PROJECT ADDRESS

50 RICHMOND ST. E.  
RENOVATIONS  
50 RICHMOND STREET EAST  
TORONTO, ONTARIO

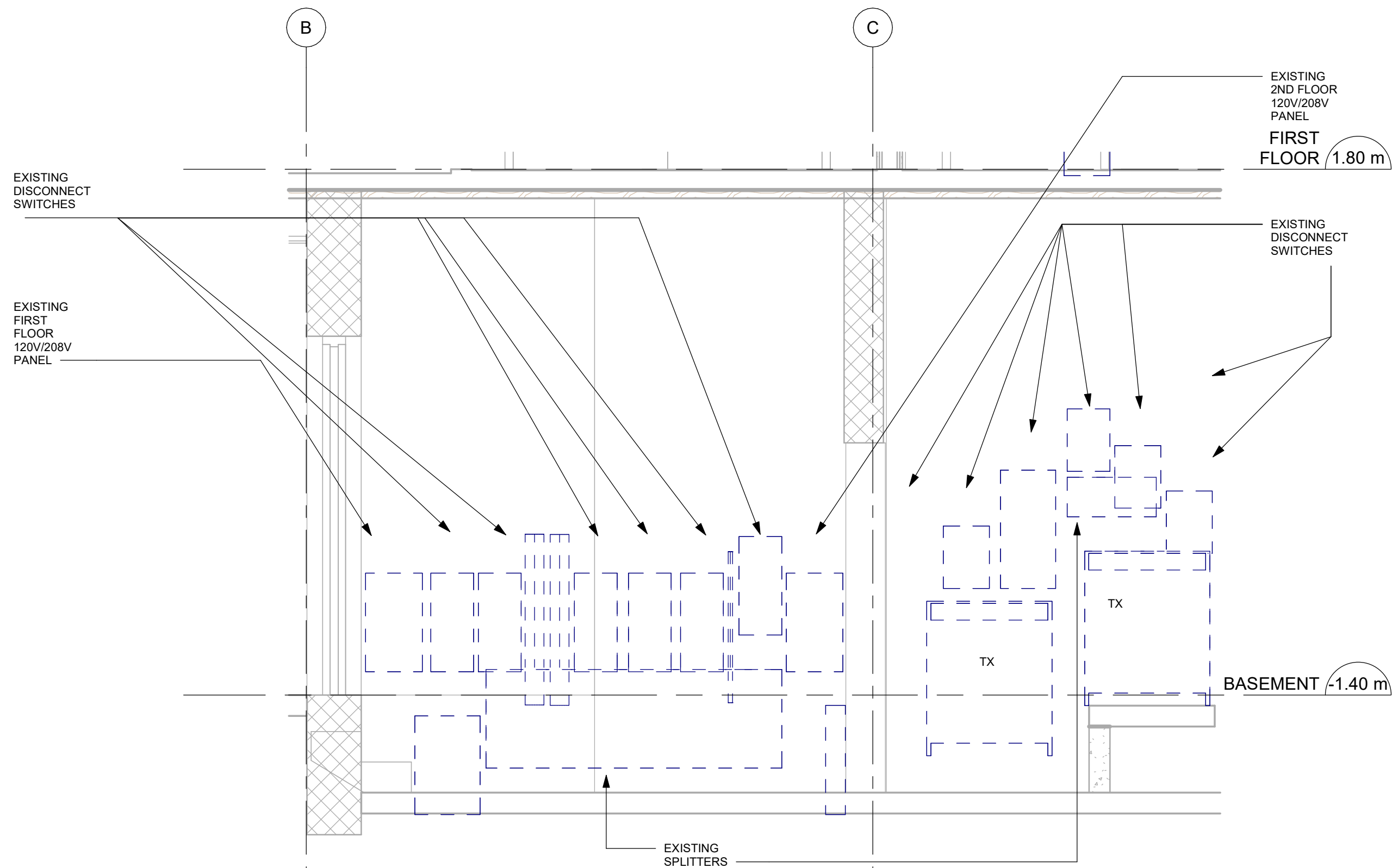
PROJECT NO: 9119-19-0162 / 30286113	
DRAWN BY: M.BOJIC	CHECKED BY: F. RASTI
PROJECT MGR: F. BOULORIAN	APPROVED BY: F. RASTI
SHEET TITLE ELECTRICAL LEGEND	
SHEET NUMBER E0001	ISSUE E



**1 ELECTRICAL DEMOLITION PLAN - BASEMENT**  
E1100 Scale: 1 : 50

- NOTES:
- EXISTING PARTITIONS, WALLS, CEILINGS AND FLOOR HEIGHTS ARE BEING REMOVED/MODIFIED FOR THIS PROJECT. ELECTRICAL EQUIPMENT ON WALLS IS TO BE REMOVED AS INDICATED. CERTAIN ELECTRICAL PIECES ARE TO BE RELOCATED AS INDICATED. MAKE SAFE ALL EQUIPMENT AND COORDINATE WITH TORONTO HYDRO REGARDING RELOCATION OF SERVICE ENTRANCE EQUIPMENT. REMOVE ALL EXISTING ELECTRICAL RECEPTACLES/SWITCHES/JACKS THROUGHOUT THE BUILDING.
  - REFER TO WALL ELEVATION FOR LOCATIONS AND QUANTITY OF EXISTING ELECTRICAL DISTRIBUTION EQUIPMENT. ALL ELECTRICAL EQUIPMENT ALONG WALL TO BE REMOVED. TRANSFORMERS TO BE RELOCATED. CONDUIT TO BE REMOVED/ADJUSTED TO SUIT NEW POWER DISTRIBUTION EQUIPMENT.

EXISTING CONDUIT RISERS FOR COMMUNICATIONS AND POWER RUN UP ALONG ELEVATOR SHAFT WALL. THESE RISERS ARE TO BE REMOVED DUE TO BASEMENT AND FIRST FLOOR ELEVATOR ENTRANCE. NEW RISER TO BE BUILT TO RECONNECT 2ND THROUGH 5TH FLOOR PANELS AND ELEVATOR MACHINE ROOM.



**2 BASEMENT WALL ELEVATION - ELECTRICAL DISTRIBUTION DEMO**  
E1100 Scale: 1 : 25

**COPYRIGHT**  
This drawing has been prepared solely for the intended use, thus any reproduction or distribution for any purpose other than authorized by Arcadis is prohibited. Written dimensions shall have precedence over scaled dimensions. Contractors shall verify and be responsible for all dimensions and conditions on the job, and Arcadis shall be informed of any variations from the dimensions and conditions shown on the drawing. Shop drawings shall be submitted by Arcadis for general conformance before proceeding with fabrication.

Arcadis Professional Services (Canada) Inc.

ISSUES		
No.	DESCRIPTION	DATE
A	50% SUBMISSION	2024-10-31
B	75% SUBMISSION	2025-03-21
C	PERMIT	2025-08-11
D	TENDER	2025-09-02
E	ADDENDUM 11	2025-10-03

CONSULTANTS

SEAL

PRIME CONSULTANT



175 Galaxy Blvd,  
Toronto, ON M9W 0C9, Canada  
tel 416 679 1930  
www.arcadis.com

PROJECT TITLE  
**CITY OF TORONTO  
ACCESSIBILITY UPGRADES**

PROJECT ADDRESS  
**50 RICHMOND ST. E.  
RENOVATIONS  
50 RICHMOND STREET EAST  
TORONTO, ONTARIO**

PROJECT NO:  
9119-19-0162 / 30286113

DRAWN BY:  
**M. BOJIC**

CHECKED BY:  
**F. RASTI**

PROJECT MGR:  
**F. BOULORIAN**

APPROVED BY:  
**F. RASTI**

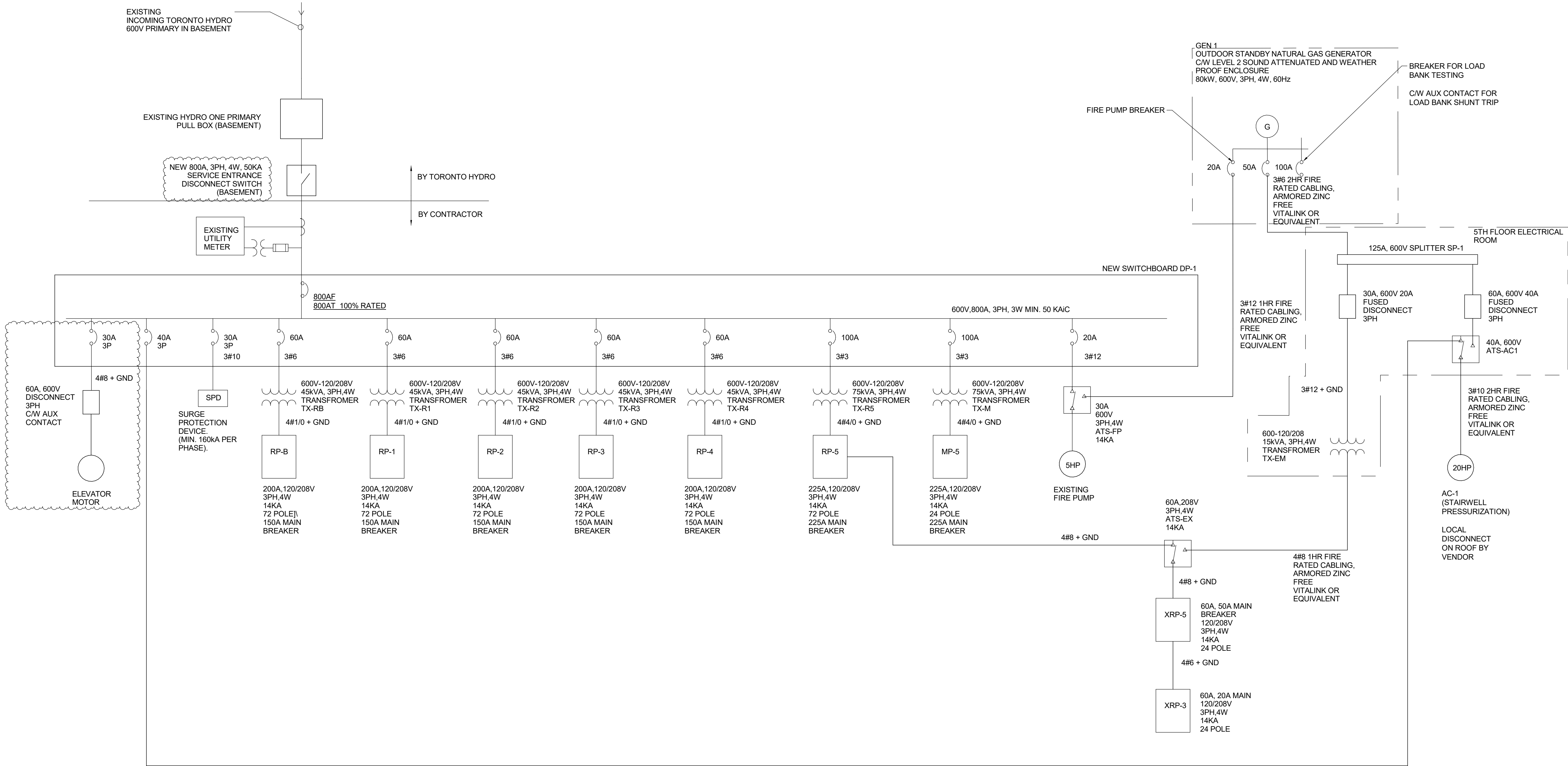
SHEET TITLE  
**ELECTRICAL  
DEMOLITION PLAN  
BASEMENT**

SHEET NUMBER  
**E1100**

ISSUE  
**E**



2025-10-03 1:13:46 PM



CLIENT

CITY OF TORONTO



Corporate Real Estate Management  
Project Management Office  
Metro Hall Toronto, ON  
M5V 3C6

**COPYRIGHT**  
This drawing has been prepared solely for the intended use, thus any reproduction or distribution for any purpose other than authorized by Arcadis is forbidden. Written dimensions shall have precedence over scaled dimensions. Contractors shall verify and be responsible for all dimensions and conditions on the job, and Arcadis shall be informed of any variations from the dimensions and conditions shown on the drawing. Shop drawings shall be submitted by Arcadis for general conformance before proceeding with fabrication.

**Arcadis Professional Services (Canada) Inc.**

ISSUES		
No.	DESCRIPTION	DATE
A	PERMIT	2025-08-11
B	TENDER	2025-09-02
C	ADDENDUM 4	2025-09-25
D	ADDENDUM 11	2025-10-03

CONSULTANTS

SEAL

PRIME CONSULTANT



175 Galaxy Blvd,  
Toronto, ON M9W 0C9, Canada  
tel 416 679 1930  
www.arcadis.com

PROJECT TITLE  
CITY OF TORONTO  
ACCESSIBILITY UPGRADES

PROJECT ADDRESS  
50 RICHMOND ST. E.  
RENOVATIONS  
50 RICHMOND STREET EAST  
TORONTO, ONTARIO

PROJECT NO: 9119-19-0162 / 30286113	
DRAWN BY: M.BOJIC	CHECKED BY: F. RASTI
PROJECT MGR: F. BOULORIAN	APPROVED BY: F. RASTI

SHEET TITLE  
ELECTRICAL SINGLE  
LINE DIAGRAM

SHEET NUMBER E2000	ISSUE D
-----------------------	------------

Branch Panel: RP-M

Location: MECHANICAL RM. 508

Supply From:

Mounting: Recessed

Enclosure: Type 1

Volts: 120/208V Y

Phases: 3

Wires: 4

A.I.C. Rating: 14KA

Mains Type: BREAKER

Mains Rating: 400

MCB Rating: 400

Notes:

CCT	Circuit Description	Trip	Poles	A		B		C		Poles	Trip	Circuit Description	CCT	
1	ACC-4	50	3	4000	4000					3	50	ACC-1	2	
3						4000	4000						4	
5								4000	4000				6	
7				4000	4000								8	
9	ACC-2	50	3			4000	4000			3	50	ACC-3	10	
11								4000	4000				12	
13				4000	4000								14	
15						4000	4000						16	
19	ROOFTOP GFCI RCT	20	1	180	180			4000	4000	1	20	ROOFTOP GFCI RCT	20	
21	GFCI RCT	20	1		180	180			18					
23	RCT	20	1				180		22					
Total Load:				24289 VA		24289 VA		24144 VA						24
Total Amps:				202.59		202.59		201.2						

Legend:

Load Classification	Connected Load	Demand Factor	Estimated Demand	Panel Totals	
Other	72000 VA	100.00%	72000 VA		
RCT	180 VA	100.00%	180 VA	Total Conn. Load:	72722 VA
GFCI RCT	720 VA	100.00%	720 VA	Total Est. Demand:	72722 VA
				Total Conn. Current:	201.86
				Total Est. Demand Current:	201.86

Notes:

Branch Panel: XRP-3														
Location:				Volts: 120/208V Y				A.I.C. Rating: 14KA						
Supply From:				Phases: 3				Mains Type: BREAKER						
Mounting: Recessed				Wires: 4				Mains Rating: 60						
Enclosure: Type 1				MCB Rating: 30										
Notes:														
CCT	Circuit Description	Trip	Poles	A		B		C		Poles	Trip	Circuit Description	CCT	
1	MEDECINE FRIDGE ROOM 308	20	1	180	180					1	20	2ND FLOOR MEDICINE FRIDGE RM 208	2	
3	BEF-06	15	1			0	0			1	15	BEF-05	4	
5	1ST FLOOR EMERGENCY LIGHTING	15	1					0	0		1	20	1ST FLOOR OPEN OFFICE EMERGENCY...	6
7	BASEMENT EMERGENCY LIGHTS	20	1	0	0					1	20	BASEMENT EMERGENCY LIGHTS	8	
9	EXIT LIGHTING BASEMENT	15	1			30	35				1	15	EXIT LIGHTING FIRST FLOOR	10
11	LITES	20	1					0	0		1	20	LITES	12
13	LITES	20	1	0	30					1	20	Exit Lighting	14	
15	LITES	20	1			0								16
17														18
19														20
21														22
23														24
Total Load:				390 VA		65 VA		0 VA						
Total Amps:				3.33		0.63		0						
Legend:														
Load Classification		Connected Load		Demand Factor		Estimated Demand		Panel Totals						
Power		0 VA		0.00%		0 VA								
LITES		0 VA		0.00%		0 VA		Total Conn. Load: 455 VA						
Exit Lighting		95 VA		100.00%		95 VA		Total Est. Demand: 455 VA						
RCT		360 VA		100.00%		360 VA		Total Conn. Current: 1.26						
								Total Est. Demand Current: 1.26						
Notes:														

Branch Panel: XRP-5

Location: TOUCHDOWN AREA 504

Supply From:

Mounting: Recessed

Enclosure: Type 1

Volts: 120/208V Y

Phases: 3

Wires: 4

A.I.C. Rating: 14

Mains Type: BREAKER

Mains Rating: 60

MCB Rating: 50

Notes:

CCT	Circuit Description	Trip	Poles	A		B		C		Poles	Trip	Circuit Description	CCT
1	STAIRWELL LIGHTING	20	1	0	0					1	20	EMERGENCY LIGHTING 4TH FLOOR	2
3	EMERGENCY LIGHTING 4TH FLOOR	20	1			0	0			1	20	EMERGENCY LIGHTING 4TH FLOOR	4
5	Exit Lighting 4TH FLOOR	20	1					30	0	1	20	EMERGENCY LIGHTING 5TH FLOOR	6
7	EMERGENCY LIGHTING 5TH FLOOR	20	1	0	20					1	20	Exit Lighting 5TH FLOOR	8
9	MEDICATION ROOM FRIDGE RM 407	20	1			180							10
11													12
13													14
15													16
17													18
19													20
21													22
23													24
Total Load:				20 VA		180 VA		30 VA					
Total Amps:				0.17		1.51		0.26					

Legend:

Load Classification	Connected Load	Demand Factor	Estimated Demand	Panel Totals	
LITES	0 VA	0.00%	0 VA		
Exit Lighting	50 VA	100.00%	50 VA	Total Conn. Load:	230 VA
RCT	180 VA	100.00%	180 VA	Total Est. Demand:	230 VA
				Total Conn. Current:	0.64
				Total Est. Demand Current:	0.64

Notes:

CLIENT

CITY OF TORONTO



Corporate Real Estate Management  
Project Management Office  
Metro Hall Toronto, ON  
M5V 3C6

**COPYRIGHT**  
This drawing has been prepared solely for the intended use, thus any reproduction or distribution for any purpose other than authorized by Arcadis is forbidden. Written dimensions shall have precedence over scaled dimensions. Contractors shall verify and be responsible for all dimensions and conditions on the job, and Arcadis shall be informed of any variations from the dimensions and conditions shown on the drawing. Shop drawings shall be submitted by Arcadis for general conformance before proceeding with fabrication.

Arcadis Professional Services (Canada) Inc.

ISSUES		
No.	DESCRIPTION	DATE
A	ADDENDUM 4	2025-09-25
B	ADDENDUM 11	2025-10-03

CONSULTANTS

SEAL

PRIME CONSULTANT



175 Galaxy Blvd,  
Toronto, ON M9W 0C9, Canada  
tel 416 679 1930  
www.arcadis.com

PROJECT TITLE  
CITY OF TORONTO  
ACCESSIBILITY UPGRADES

PROJECT ADDRESS  
50 RICHMOND ST. E.  
RENOVATIONS  
50 RICHMOND STREET EAST  
TORONTO, ONTARIO

PROJECT NO:  
9119-19-0162 / 30286113

DRAWN BY: M.BOJIC	CHECKED BY:
----------------------	-------------